

THE CLIFTON
4 Bedroom Home



CANTERBURY
PARK
LIVERPOOL



PRINCESS DRIVE , HUYTON



THE CLIFTON

4 Bedroom Home

GROUND FLOOR

Kitchen / Dining	3285 x 5552mm	10' 8" x 18' 2"
Lounge	3325 x 5069mm	10' 9" x 16' 6"
W.C	2010 x 906mm	6' 6" x 3' 0"

FIRST FLOOR

Bedroom 1	3469 x 2761mm	11' 4" x 9' 1"
Bedroom 2	3149 x 2761mm	10' 3" x 9' 1"
Bedroom 3	2490 x 2713mm	8' 2" x 8' 9"
Bedroom 4	2010 x 2713mm	6' 6" x 8' 9"
Bathroom	2091 x 1700mm	6' 9" x 5' 6"
En-suite	1643 x 2761mm	5' 4" x 9' 1"

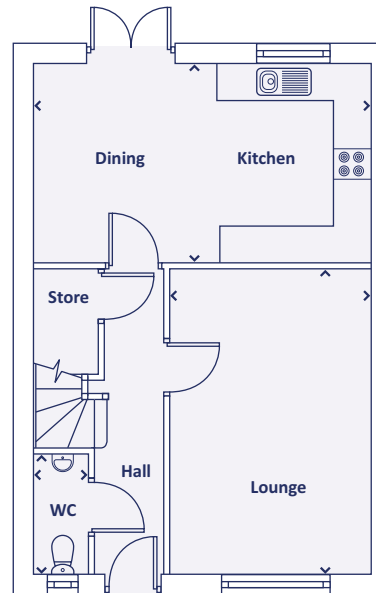
KEY:

› Longest measurement taken

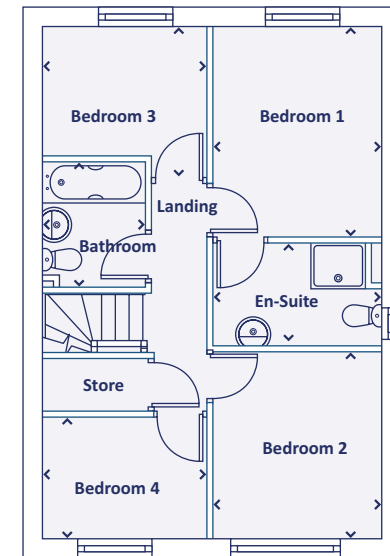
PLEASE NOTE:

All sizes are approximate and may be subject to some change through the construction process

GROUND FLOOR



FIRST FLOOR



THE SINDERBY
3 Bedroom Home



CANTERBURY
PARK
LIVERPOOL



PRINCESS DRIVE , HUYTON



THE SINDERBY

3 Bedroom Home

GROUND FLOOR

Kitchen / Dining	4059 x 3202mm	13' 3" x 10' 5"
Lounge	4059 x 4203mm	13' 3" x 13' 8"
W.C	1453 x 1054mm	4' 8" x 3' 5"

FIRST FLOOR

Bedroom 1	2831 x 4150mm	9' 3" x 13' 6"
Bedroom 2	2500 x 3528mm	8' 2" x 11' 6"
Bedroom 3	1916 x 2568mm	6' 3" x 8' 4"
Bathroom	1585 x 2292mm	5' 2" x 7' 5"
En-suite	1482 x 2612mm	4' 9" x 8' 6"

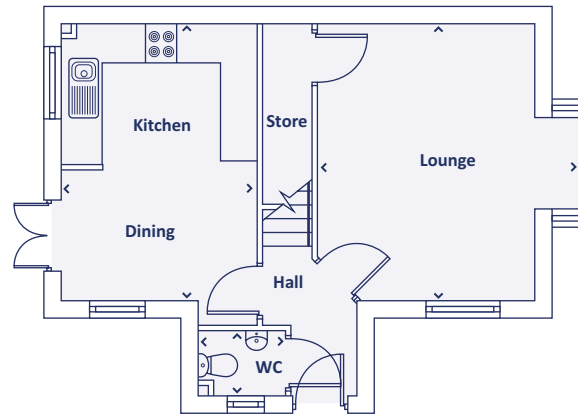
KEY:

› Longest measurement taken

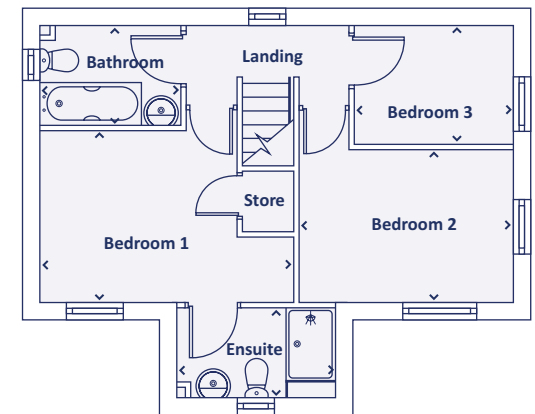
PLEASE NOTE:

All sizes are approximate and may be subject to some change through the construction process

GROUND FLOOR



FIRST FLOOR



THE OVERTON
4 Bedroom Home



CANTERBURY
PARK
LIVERPOOL



PRINCESS DRIVE , HUYTON



THE OVERTON

4 Bedroom Home

GROUND FLOOR

Kitchen / Dining	4832 x 2909mm	13' 3" x 10' 5"
Lounge	4847 x 3048mm	13' 3" x 13' 8"
W.C	1660 x 900mm	4' 8" x 3' 5"

FIRST FLOOR

Bedroom 1	3439 x 2960mm	9' 3" x 13' 6"
Bedroom 2	4847 x 3048mm	8' 2" x 11' 6"
Bathroom	1940 x 2422mm	5' 2" x 7' 5"
En-suite	1315 x 2969mm	4' 9" x 8' 6"

SECOND FLOOR

Bedroom 3	4151 x 2960mm	9' 3" x 13' 6"
Bedroom 4	4151 x 3048mm	8' 2" x 11' 6"

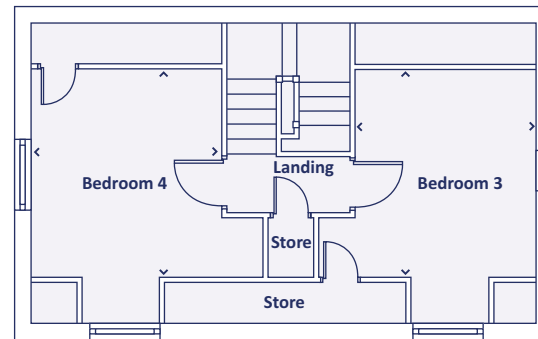
KEY:

➤ Longest measurement taken

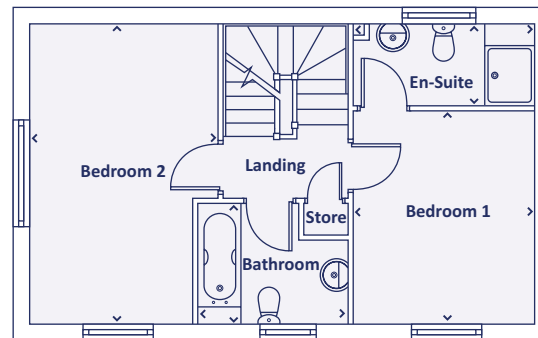
PLEASE NOTE:

All sizes are approximate and may be subject to some change through the construction process

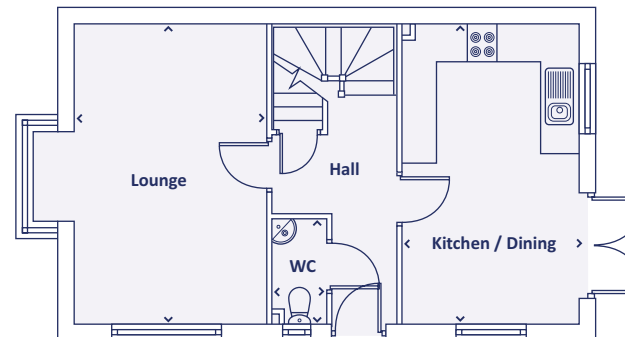
SECOND FLOOR



FIRST FLOOR



GROUND FLOOR



THE LAYTHAM
3 Bedroom Home



CANTERBURY
PARK
LIVERPOOL



PRINCESS DRIVE , HUYTON



THE LAYTHAM

3 Bedroom Home

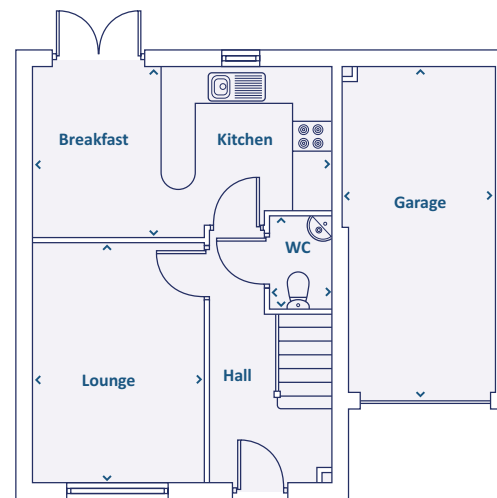
GROUND FLOOR

Kitchen / Dining	2894 x 5059mm	9' 5" x 16' 6"
Lounge	4077 x 2946mm	13' 4" x 9' 7"
W.C	1584 x 1023mm	5' 2" x 3' 5"

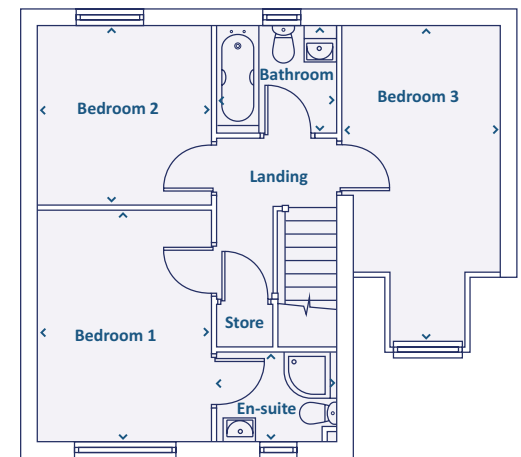
FIRST FLOOR

Bedroom 1	3888 x 2946mm	9' 3" x 13' 6"
Bedroom 2	3083 x 2946mm	8' 2" x 11' 6"
Bedroom 3	5466 x 2736mm	6' 3" x 8' 4"
Bathroom	1815 x 2033mm	5' 2" x 7' 5"
En-suite	1460 x 2036mm	4' 8" x 6' 7"

GROUND FLOOR



FIRST FLOOR



KEY:

› Longest measurement taken

PLEASE NOTE:

All sizes are approximate and may be subject to some change through the construction process